



ITEM	PART#	QTY.	DESCRIPTION
1	5303	1	Main Rack
2	HDW9386	2	M8 x 40mm Button Head Bolt
3	HDW9387	2	M8 x 50mm Button Head Bolt
4	HDW9002	4	5/16 Flat Washer
5	HDW9411	2	5/8 x 7/8 Spacer
6		2	Tapered Spacer

Remove the seat.

Remove the rear fender by the two phillips Head screws and then the back portion has a tab so you will have to pull forward a little on the fender.

On the back portion of the sub frame there is a rubber flap. Flip the flap forward and you will see the two threaded hole in the sub frame this is where the back portion of the rack will mount.

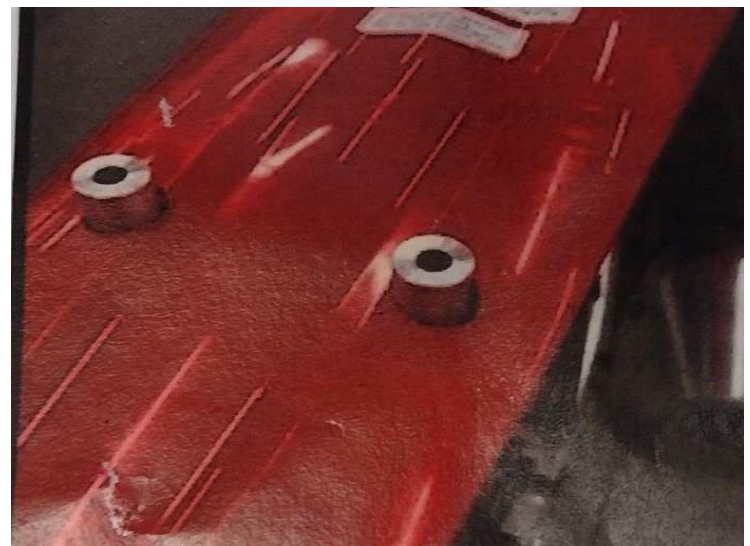
You will have to measure and mark these locations on your rear fender and then drill through using a 7/8 or 1" hole saw. NOTE: When drilling through plastic with the hole saw you can run the drill in reverse, this will cut better and cleaner.

You can also trim the rubber flap to fit around the spacers.

You can place the rear fender back in place and make sure everything lines up.

The front portion of the rack will use the 1/2 X 1" spacer against the bike and the M8 x 50mm button head bolts and washers in the seat mount locations.

The back portion will now use the 5/8 x 7/8 spacers going into the holes you drilled and rack will sit on top of these and use the M8 x 40 Button head bolts and washers.



Once the rack is all in place you can tight all the bolts.

You can put anti seize on the bolts as a purcation if your like.

Rack load limit is 40 pounds.

Do not use rack as a grab rail.

Never carry a passenger on the rack it is not a seat.



Any Questions or Comments Call

320-964-1616

Monday thru Thursday 7:00 to 4:30 CST

