

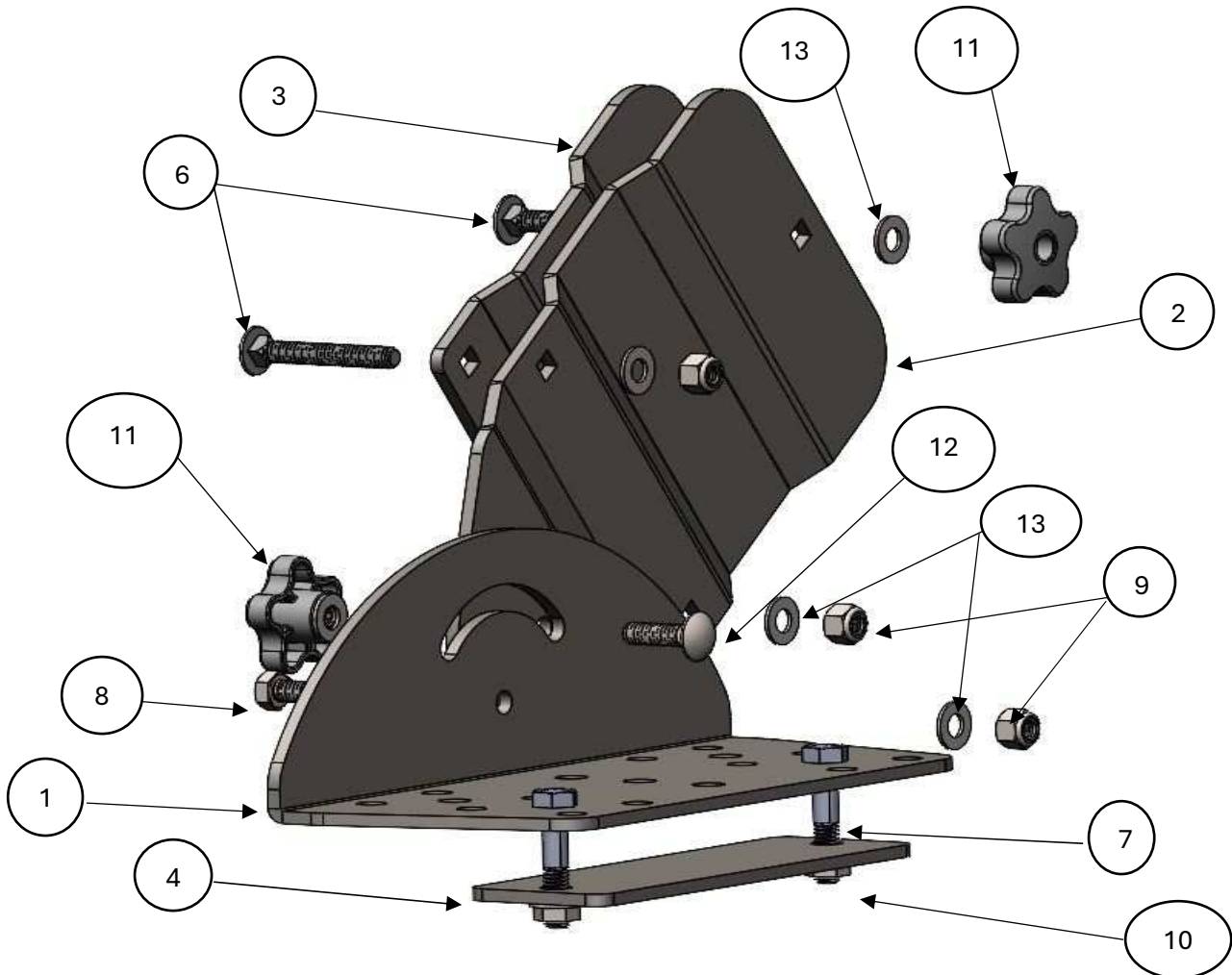
## ATV CHAIN SAW CARRIER

The chain saw carrier is a universal fit.

This chain saw carrier simply camps or pinches the bar between the two plates to allow you to move from location to location. The carrier is not designed for traveling down the road while trailered. Make sure the carrier stays secure at all times and do not allow it to rotate or it may cause damage to saw or ATV.

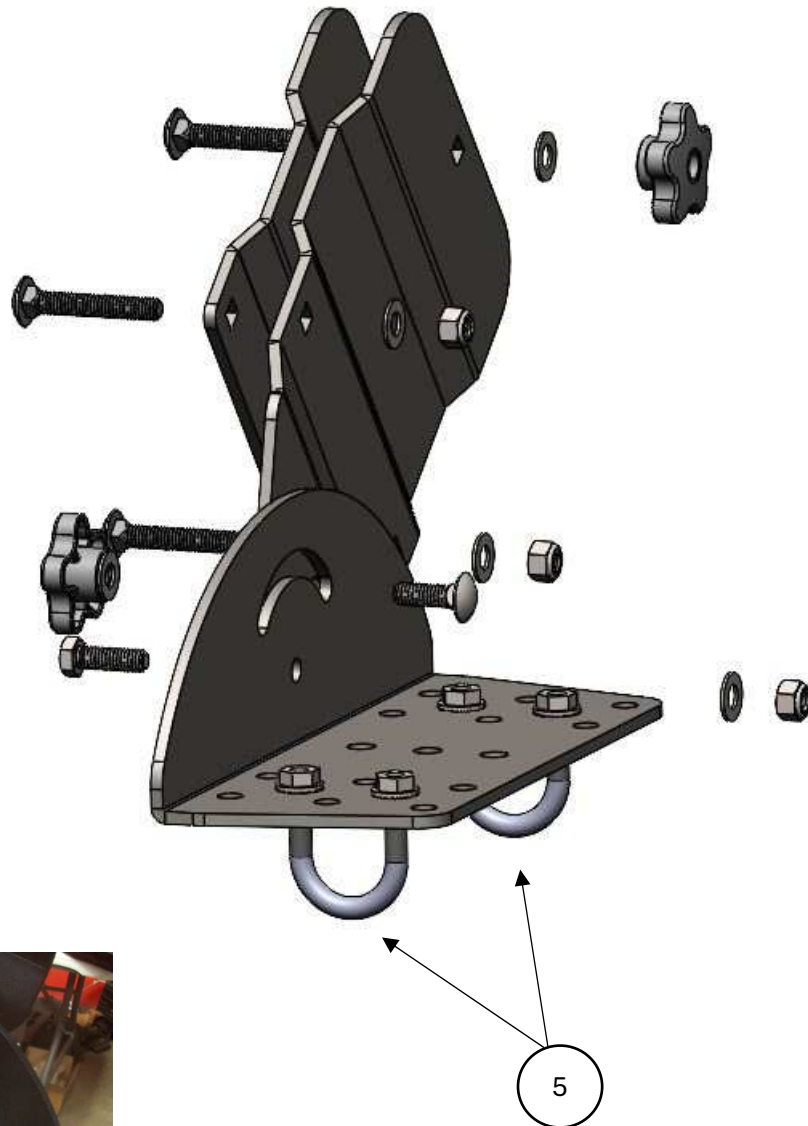
ITEM	PART#	QTY.	DESCRIPTION
1	5001-1	1	Saw Holder Base Plate
2	5001-2	1	Saw Bar Clamp Inboard
3	5001-3	1	Saw Holder Clamp Outboard
4	5001-4	1	Saw Carrier Mounting Backing Plate
5	HDW2150	2	5/16x 1-1/8 x 1-3/4 Rpund U-Bolt
6	HDW2067	3	5/16 x 2 Carriage Bolt
7	HDW2052	2	5/16 x 1-3/4 Hex Bolt
8	HDW2051	1	5/16 x 1 Hex Bolt
9	HDW7058	3	5/16 Nylock Nut
10	HDW7056	6	5/16 Wiz Nut
11	HDW9119-1	2	5/16 Female Knob Nut
12	HDW2064	1	5/16 x 1 Carriage Bolt
13	HDW9002	6	5/16 Flat Washer

Assemble per drawing below. The 2" carriage bolts with washers and nylock nuts are used on the top clamp section with the top bolt using the knob nut and a washer for tension adjustability the lower two just use the washers and nylock nuts and adjust these so bar gets pinched evenly. Attach these to the mounting bracket with the 5/16 x 1 hex bolt washer and nut as the pivot bolt then use the 1" carriage bolt washer and nut as the angle adjust bolt.



First page shows the mounting bracket which can be used to mount to solid services and some tube type racks by sandwiching between the base plate (item 1) and the mounting plate (item 4). The mounting plate can be moved around and attached to the base plate in many locations.

Picture below shows with the U-Bolts and they can be secured to round tubing and they can be moved around in other locations on the base plate.



On most Polaris  
And Can-Am you  
Can Use the Bed  
Twist n Locks

